



RERA NUMBER : TN/01/Layout/9727/2022



A TIMELESS THEME OF LOVE, JOY AND NATURE.

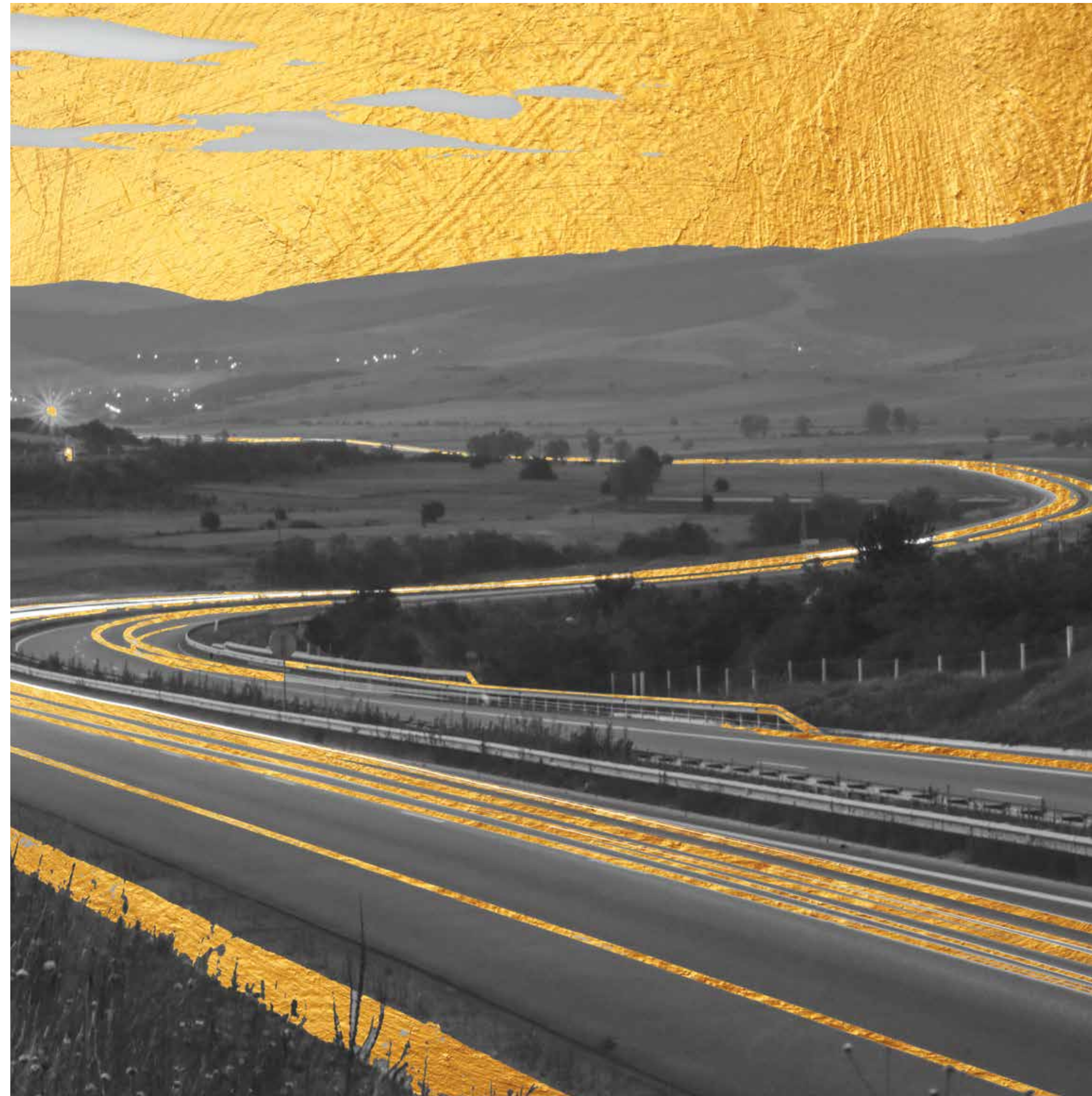
ENCHANTÈ, AN ABODE OF MAGNIFICENT PLOTS & VILLAS AT NAVALUR, CHENNAI
WITH ALL MODERN FEATURES REQUIRED FOR A CONTEMPORARY LIFESTYLE YET STICKING TO ITS TRADITION.
THESE RESIDENTIAL VILLAS LOCATED IN THE MIDDLE OF OMR SURROUNDED IN BETWEEN
THE GREENERY AND THE SEA COASTS.

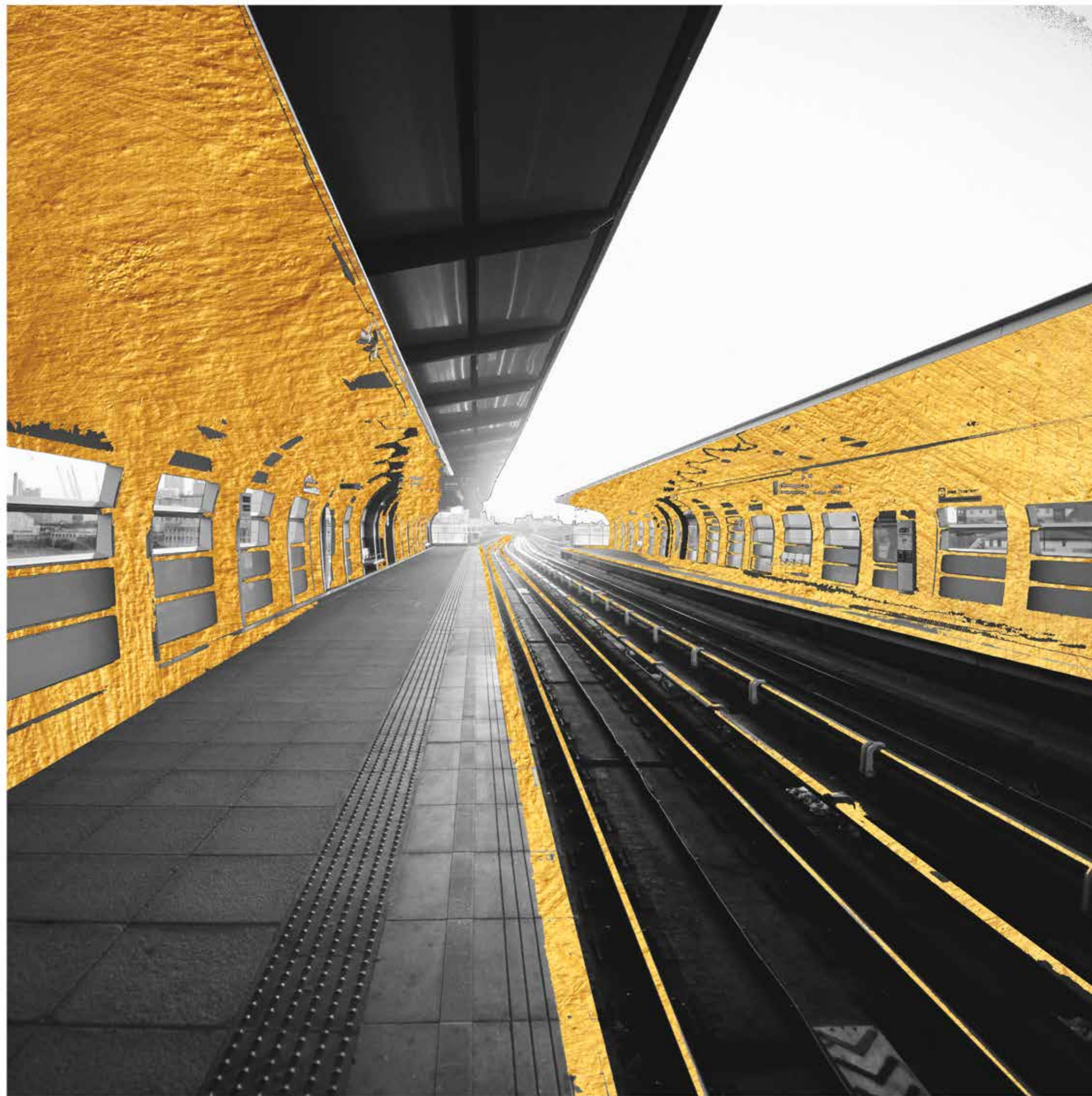
IT IS NOW EASY TO EXPERIENCE HOW MODERN COMFORTS BLEND SEAMLESSLY WITH
TRADITION & MAGNIFICENT AMBIENCE AND HOW LIFESTYLE AMENITIES COMBINE WITH REFRESHING GREEN VIEWS.
THE MASTERPLAN OF ENCHANTÈ ENABLES THE BEST UTILIZATION OF THE SPACE.



ABOUT OMR

- OMR, THE IT EXPRESSWAY IS BEEN IDENTIFIED AS SECONDARY AND PERIPHERY BUSINESS CENTER OF THE CITY.
- THE PRESTIGIOUS TIDEL PARK, SIPCOT HOME TO A NUMBER OF BPO AND IT/ITES COMPANIES AND MANY OTHER MAJOR IT/ITES COMPANIES IN THE COUNTRY ARE SITUATED.
- MORE THAN 3, 50,000 EMPLOYEES WORK AT IT CORRIDOR OF CHENNAI.
- WELL-DEVELOPED SOCIAL INFRA-STRUCTURE /BETTER TRANSPORT & CONNECTIVITY / WALK TO WORK





UPCOMING INFRA DEVELOPMENT IN OMR

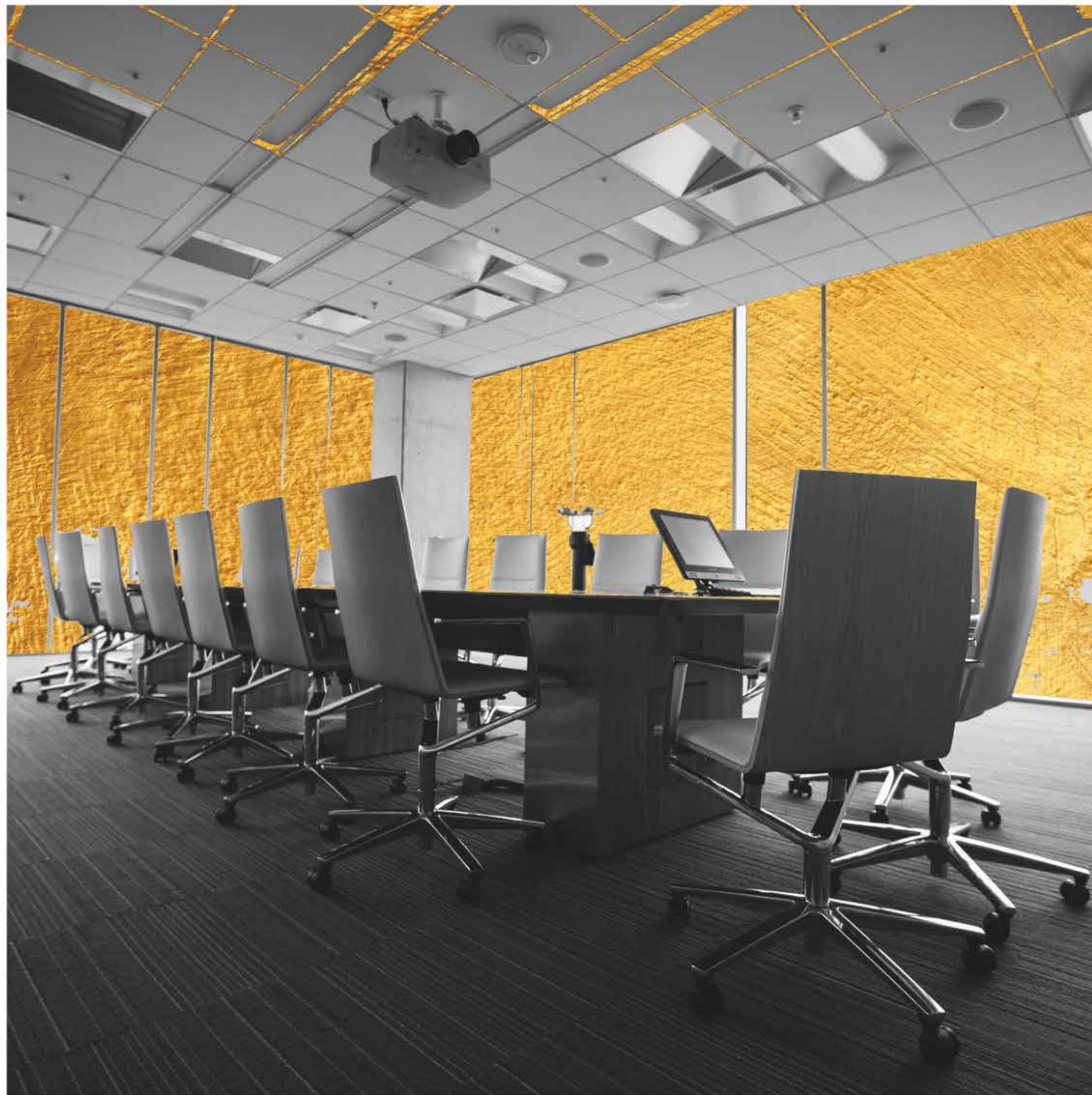
- METRO RAIL, PROPOSED PHASE 2 CONNECTING THE CITY AND SUBURBS, WHICH CONNECT MADAVARAM TO SIPCOT
- CHENNAI PERIPHERAL RING ROAD (ENNORE PORT – MAHABALIPURAM)
- PHASE 2 SIX LANE WIDENING PROJECT (SIRUSERI – MAHABALIPURAM)
- 5 FLY OVER PROPOSED TO REDUCE TRAFFIC
- ECR – OMR LINK ROAD
- 3 DECK ELEVATED CORRIDOR TO MERGE WITH METRO RAIL



ABOUT SIRUSERI

- SIRUSERI, THE HOME TO ASIA'S LARGEST IT PARK, SPREAD OVER 780 ACERS OF LAND DEDICATED TO DEVELOP IT PARK UNDER SIPCOT (STATE INDUSTRIES PROMOTION CORPORATION OF TAMILNADU)
- 90000 EMPLOYEES
- 40Z+ CORPORATE COMPANIES
- THE AREAS IN AND AROUND SIRUSERI HAVE SEEN PRECEDENTED GROWTH IN THE LAST FEW YEARS





TOP IT COMPANIES

- TCS
- HEXAWARE
- ADANI DATA CENTER
- AIRTEL DATA CENTER
- COGNIZANT
- ATOS
- CAPGEMINI
- SYNTEL
- ASPIRE
- SOPRA SETRIA





A timeless journey starts here...



Aerial View



LOCATION

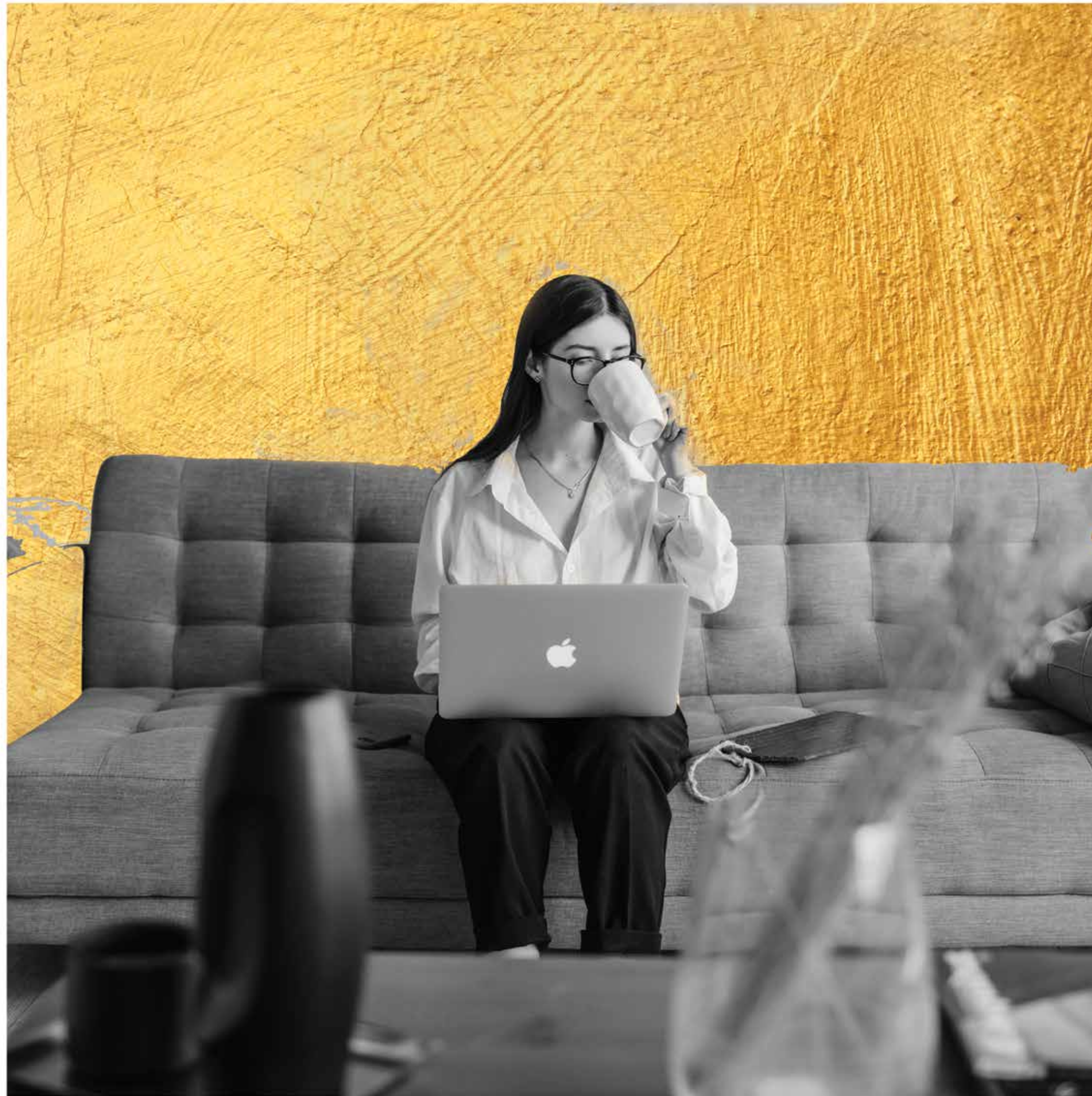
- EXCELLENT SOCIAL AND ECONOMIC INFRASTRUCTURE
- OFF THALAMBUR MAIN ROAD, 5 KMS FROM SIRUSERI SIPCOT
- ADJACENT TO TCS, SIRUSERI SIPCIT
- OFF OMR, 5 MINS FROM NAVALUR JUNCTION AND 15 MINS FROM SHOLINGANALLUR JUNCTION
- REPUTED SCHOOLS AND COLLEGES WITHIN THE VICINITY
- MULTI-SPECIALTY HOSPITALS AND DISPENSARIES WITHIN FEW KILOMETER
- EASY ACCESS TO ENTERTAINMENT AND RECREATION CENTERS IN ECR
- QUICK CONNECTIVITY TO MAIN SHOPPING AREA, INTERNATIONAL AIRPORT AND UPCOMING METRO TRANSPORT
- DTCP AND RERA APPROVED RESIDENTIAL VILLA PLOTS
- GATED COMMUNITY PROJECT, WITH CLOSE PROXIMITY TO EVERY CONVENIENCES AND YOUR WORKPLACE WILL ENSURE YOU LIVE A HASSLE-FREE LIFE



INVESTMENT

- ENCHANTE IS SITUATED AT THE EPICENTER OF OMR.
- A LOCATION THAT GIVES ACCESS TO OMR AS WELL AS GST ROAD.
- PROXIMITY TO IT PARKS AND GOOD ROAD CONNECTIVITY VIA OMR MAKE IT A PREMIUM RENTAL HUB AMID TENANTS
- THE IDEAL PRICING
- HIGH APPRECIATION VALUE
- ASSURED RETURNS
- SURROUNDED BY HIGH-TECH WORLD OF SIRUSERI
- A PROMISING AND FAST DEVELOPING HUB





CLOSE TO WORK AND LIFESTYLE

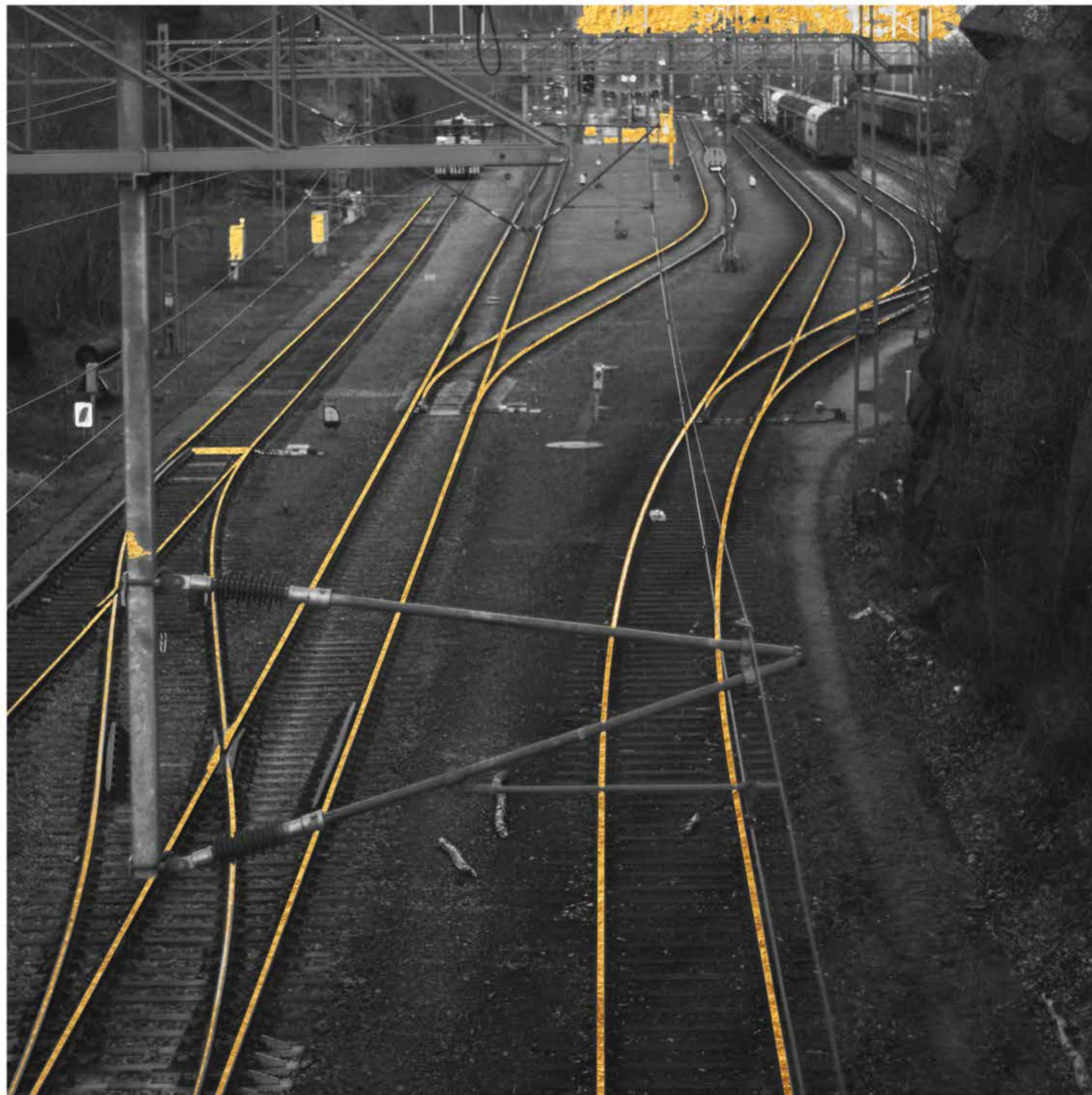
- WE HELP YOU TO SPEND LESS TIME TRAVELLING TO WORK AND MORE TIME WITH YOUR FAMILY, WITH LEADING SOFTWARE AND TECHNOLOGY GIANTS SITUATED WITHIN 5 KMS RADIUS.
- WORK IS JUST A FEW MINUTES AWAY. THE BEST SHOPPING, GROCERY STORES, PHARMACIES, HOSPITALS, SCHOOLS AND ENTERTAINMENT AREAS WITHIN THE PROXIMITY.
- FREQUENT PUBLIC TRANSPORT SERVICES INCLUDING MTC BUSES, CABS AND AUTO RICKSHAWS



LUXURY & NATURE

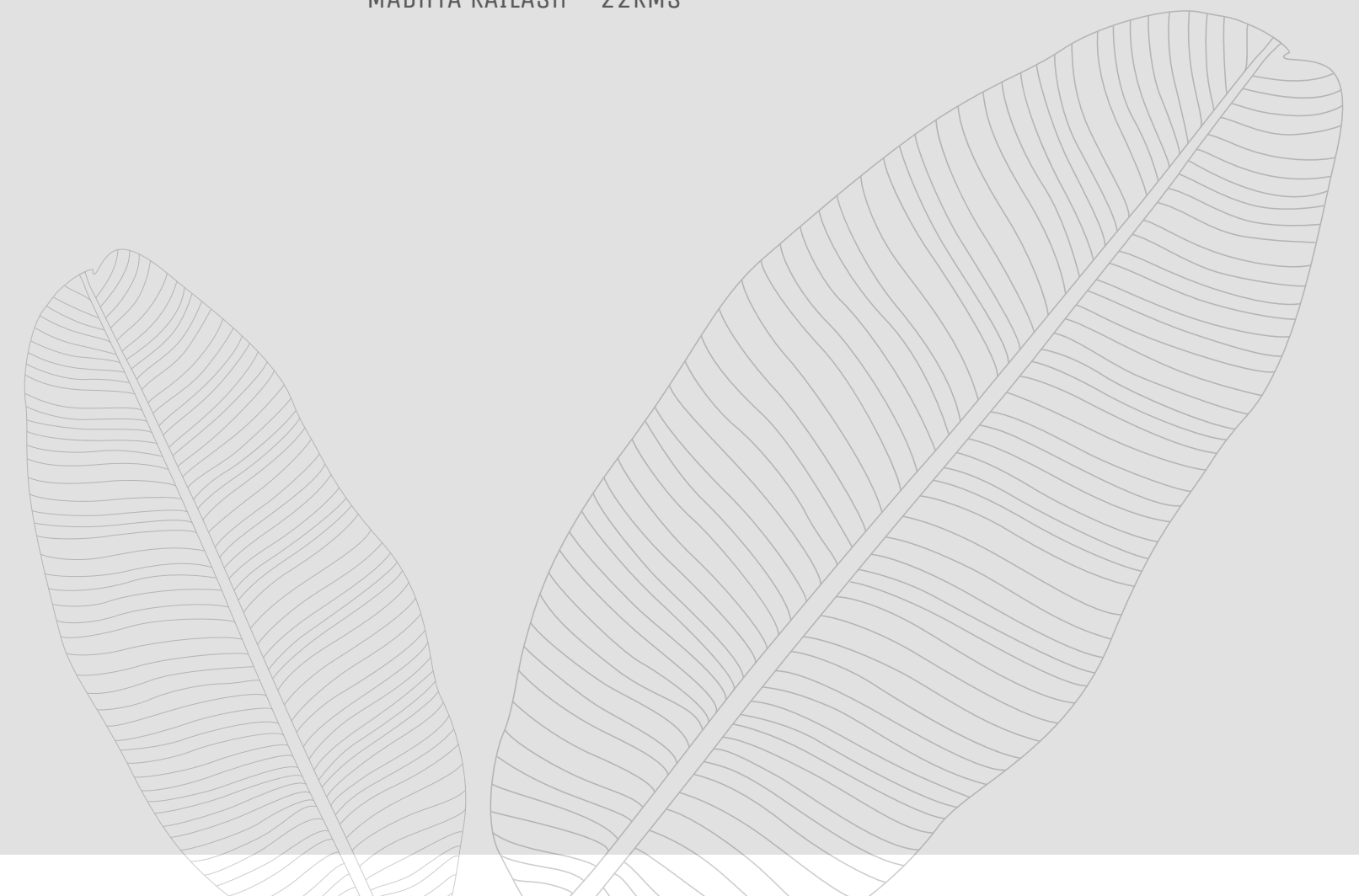
- ENCHANTE STRIKES THE PERFECT BALANCE BETWEEN, PRIVACY, LUXURY & ENVIRONMENT – FRIENDLY LIVING.
- LOADED WITH ALL THE MODERN CONVENIENCES INCLUDING SECURITY, RELAXING AMENITIES, LUXURY EMBELLISHMENTS AND EXQUISITE SPACES.
- THIS HAS BEEN SPECIFICALLY DESIGNED TO LIVE AMIDST OF NATURE
- GREEN LIFESTYLE THAT IS DESTINED FOR THE FUTURE
- METICULOUSLY PLANNED ABUNDANT GREEN AREAS
- SERENE WATER FUTURE
- SURROUNDED BY PEACE AND SERENITY, FRESH AIR, LAKE BY SIDE WONDERFUL SUNLIGHT, LUSH GREEN AND PERFECT HARMONY





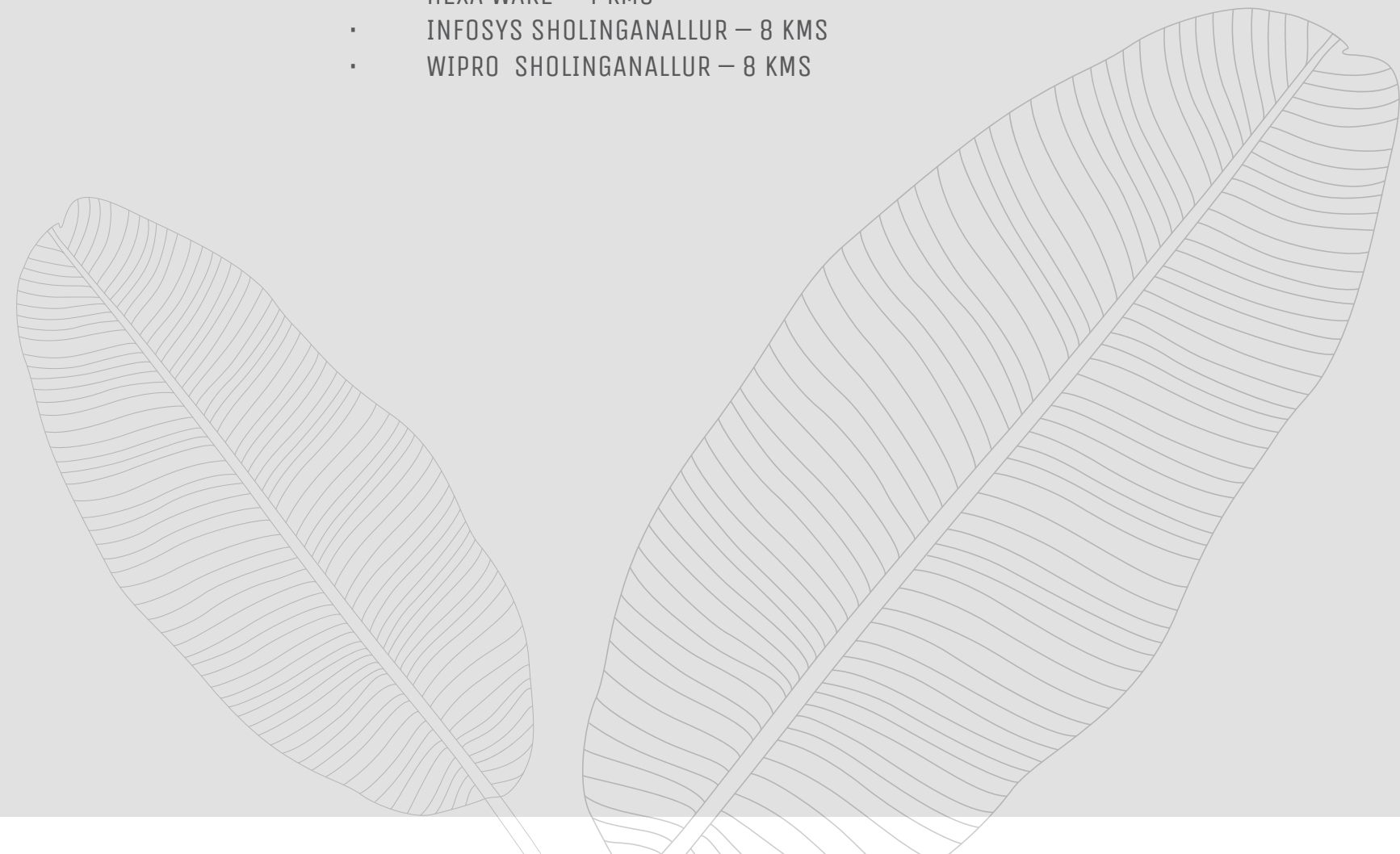
MAIN JUNCTIONS

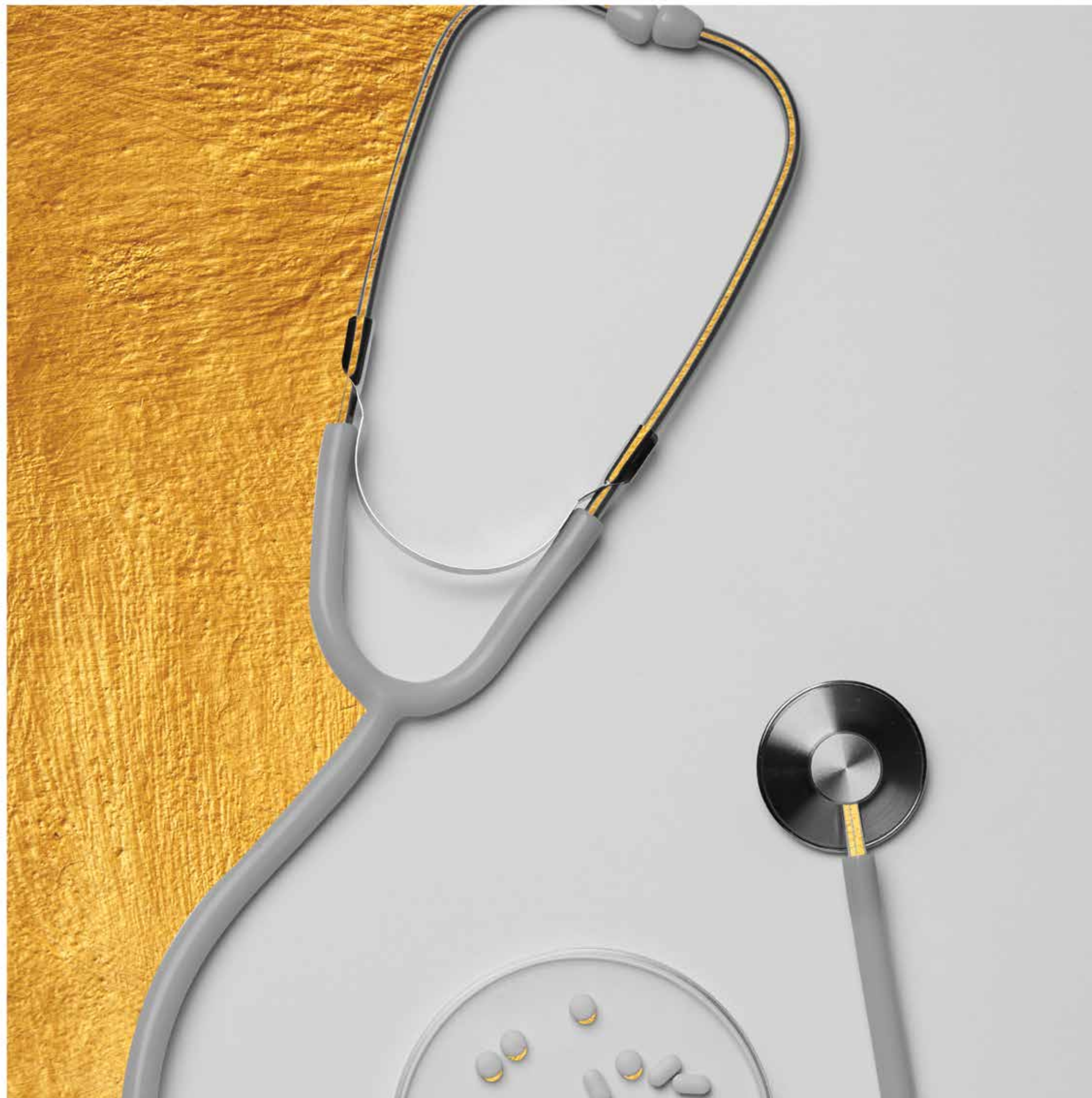
- NAVALUR – 2 KMS
- SHOLINGANALLUR – 9 KMS
- KELMABAKAM – 10 KMS
- MEDAVAKAM – 10 KMS
- VELACHERY – 17 KMS
- SRP TOOLS – 18 KMS
- MADHYA KAILASH – 22KMS



CORPORATES

- SIEMENS SIRUSERI – 3 KMS
- ETA TECH PARK – 3 KMS
- POLARIS NAVALUR – 3 KMS
- HCL NAVALUR – 3 KMS
- TCS SIRUSERI – 4 KMS
- CTS SIRUSERI – 4 KMS
- SIPCOT SIRUSERI – 4 KMS
- FL SMIDTH – 4 KM
- HEXA WARE – 4 KMS
- INFOSYS SHOLINGANALLUR – 8 KMS
- WIPRO SHOLINGANALLUR – 8 KMS





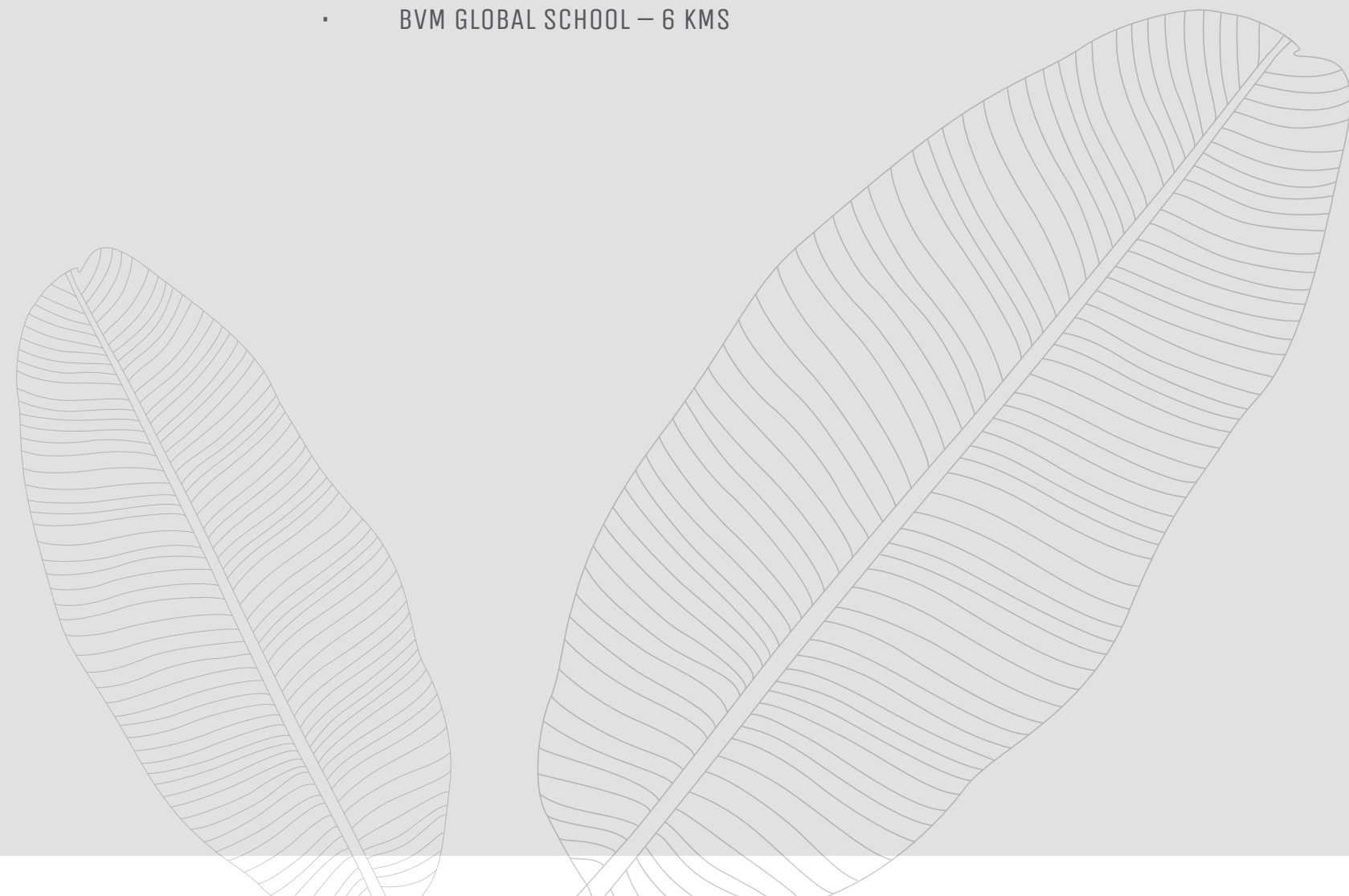
HOSPITALS

- SRI ISARI VELAN HOSPITAL – 2.KMS
- CHETTINAD HELTH CITY – 9KMS
- SUPREME HOSPITAL – 8 KMS
- GLOBAL HEALTH CITY – 10 KMS
- LIFELINE HOSPITAL – 16 KMS
- DR. KAMACHI HOSPITAL – 17 KMS



SCHOOLS

- HLC INTERNATIONAL SCHOOL – 2 KMS
- HIRANANDANI UPSCALE SCHOOL – 4 KMS
- PSBB MILLINUM SCHOOL – 4 KMS
- TATVA SCHOOL – 5 KMS
- BVM GLOBAL SCHOOL – 6 KMS





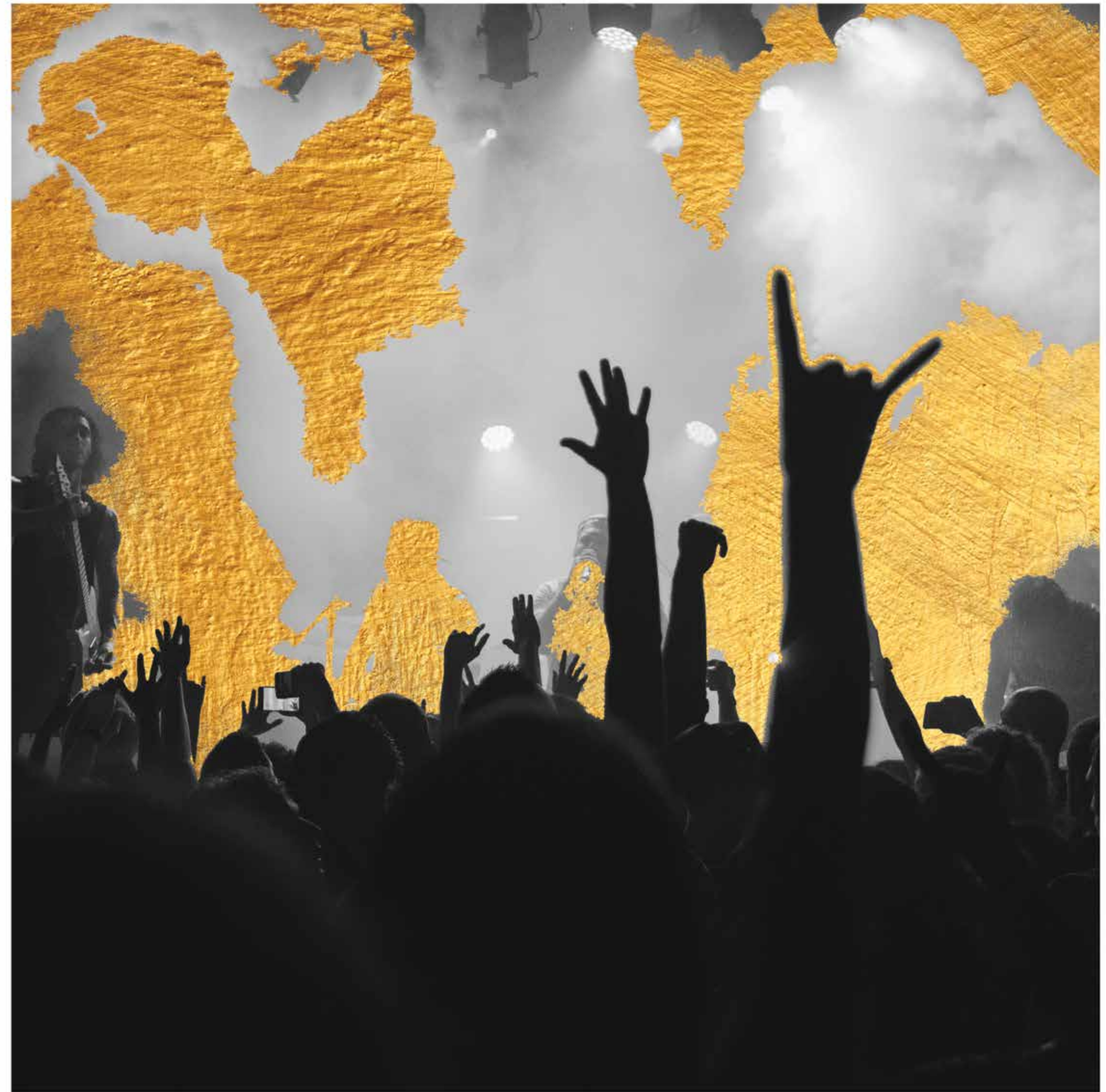
COLLEGES

- TG NARAYANASWAMY COLLEGE – 1 KMS
- SRI VENKATESWARA COLLEGE AND HOSPITAL – 2 KMS
- AGNI COLLEGE OF TECHNOLOGY – 2.KMS
- ITM BUSINESS SCHOOL – 3 KMS
- MOHAMED SATHAK COLLEGE – 5 KMS
- PRINCE VENKATESHWARA COLLEGE – 6 KMS
- SATHYABAMA UNIVERSITY – 6 KMS
- ANAND INSTITUTE AND TECHNOLOGY – 6 KMS
- HINDUSTAN UNIVERSITY – 8 KMS
- VIT CHENNAI CAMPUS – 8 KMS



ENTERTAINMENT

- VIVIRA MALL – 3 KMS
- MARINA MALL – 4 KMS



ENCHANTÉ
VILLA/PLOTS | BY PACIFICA



Follow us on : [f/pacificacompanies](#) [@/pacificacompanies](#) [w/pacificacompanies.co.in](#)

AHMEDABAD | VADODARA | CHENNAI | HYDERABAD | BENGALURU | DEESA | NCR

Residential | Senior Living | Township | Plotted Development | Hotels | IT Parks | Business Parks | Commercial